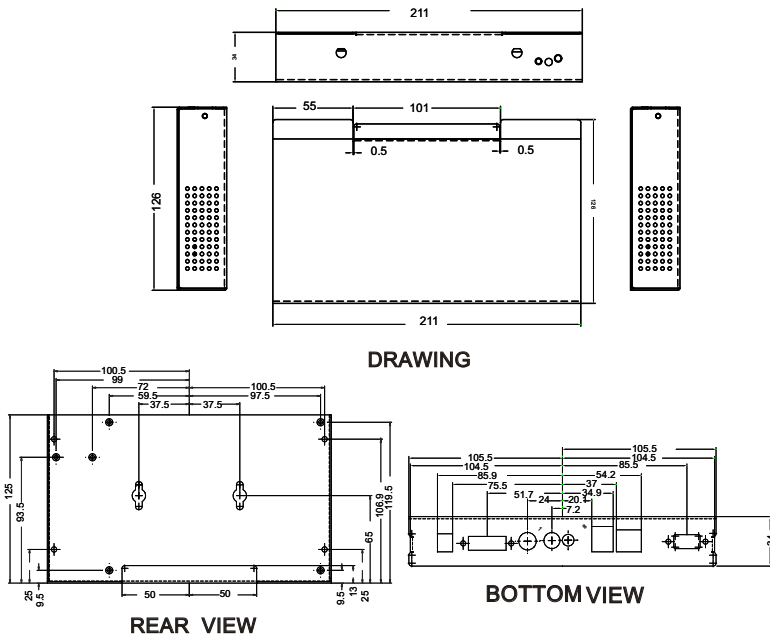


Network Player Plus / BOX

MSS300

BOX Mechanical Drawing



Product Outlook

System Specifications

General :

- Dimensions : 8 1/4(W)x1 3/8(H)x5(D) inches
211(W)x126(H)x34(D)mm
- Weight : Approx. 0.6kg
- Storage Media : 512MB, Optional with bigger capacity up to (40GB)
(Need to be Linux ext2 format)
- USB Port : USB 2.0 Flash Storage Drive
- Content Update : Ethernet/WLAN/USB flash drive

Content(Media Formats):

- Video Format support : MPEG1, MPEG2, MPEG4
- Graphics Format support : JPEG, BMP
- Text Banner : Variable scrolling speed and position

Input/Output:

- Output
Video Output : DVI-I / VGA / S-video/Composite*
- Audio Output : Stereo Phone jack
- Network connection
Ethernet LAN : 1 x RJ45-10/100/Mbps

Environment Considerations:

- Operating Temperature: 0 to 50°C
- Humidity : 5-85%@50°C

Power Specifications:

- Power Adapter : 12V DC in
- Power Consumption : Approx:5W
- Power Source : AC100~240V, Universal, ±10%

Available Options:

- RS232c x 1
- miniPCI for 802.11 b/g WLAN

Accessories:

- AC-DC Power adapter and AC Power cable
- Media Signage Organizer software
- Operation User Manual
- DVI-VGA Cable

* For switching to S-Video/Composite, it must go through software to switch from/to DVI output.

APPROVALS & CERTIFICATES

This product have been tested / type approved by the following classification societies:

• CE
• FCC



*All Product specifications are subject to change without notice. All copyrights and belong to their respective companies.

Network Player v.s Network Player Plus



Group Management



Network Transfer



Content Encryption



Daily Schedule



Auto Update

Management Software Comparison Table

| | Network Player | Network Player Plus |
|---|-------------------------|--|
| Program/playlist Control | ✓ | ✓ |
| Group Management | ✓ | ✓ |
| Group Exporting | ✓ | ✓ |
| Ticker Transition Effect | ✓ | ✓ |
| Adjustable Ticker Speed | ✓ | ✓ |
| Ticker Font & Back Color Setup | ✓ | ✓ |
| Client Billing Log | ✓ | ✓ |
| Graphics in Portrait Mode | ✓ | ✓ |
| Multiple Zones Display | ✓ | ✓ |
| Boot-up logo Setup | ✓ | ✓ |
| Transfer via LAN/WLAN/USB | ✓ | ✓ |
| Firmware Update via USB / LAN | ✓ | ✓ |
| Client Configuration via USB/LAN | ✓ | ✓ |
| Get Client/Group log | ✓ | ✓ |
| Clock Display | ✓ | ✓ |
| RS232 Connection Control | ✓ | ✓ |
| Preview Window | ✓ | ✓ |
| Ticker Direction | 5 options | 5 options |
| Data Security Protection | Data Encryption | Data Encryption |
| Get Client Status | manually | automatically |
| Playlist Scheduling | Repeated Daily Schedule | Daily/Weekly/Any Day |
| Client IP Mode | Fixed Mode | Fixed / DHCP Mode |
| Auto Media Update | N/A | Client retrieves media content from server automatically at pre-defined schedule |
| Auto Time Sync | N/A | Client synchronizes its time with server automatically at pre-defined schedule |
| Assign a client to different group with a click | N/A | Drop-down menu to easily assign a client to different group |